

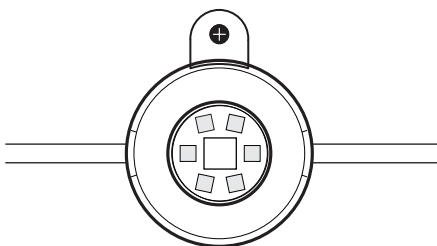
Get started

Download the
LIFX app to begin.



Safety Instructions + Installation Guide

LIFX Permanent
Outdoor Lights



50ft length with
30 individual lights



Prefer setup videos?
Text here too small or long?
Visit lifx.com/getstarted



Connects to
your 2.4 GHz
Wi-Fi network.



SUPER QUICK SETUP

This is your matter code.
You'll need this after installing
your light and turning it on.



matter

Need extra help?

We've got tips & articles
at support.lifx.com or you
can chat with us live at
[LIFX.com](https://lifx.com)

IMPORTANT!
Keep this code.

Installing your Outdoor Lights.



Cautions:

WARNING: When using outdoor use portable luminaires, basic safety precautions should always be followed to reduce the risk of fire, electric shock, and personal injury, including the following cautions—

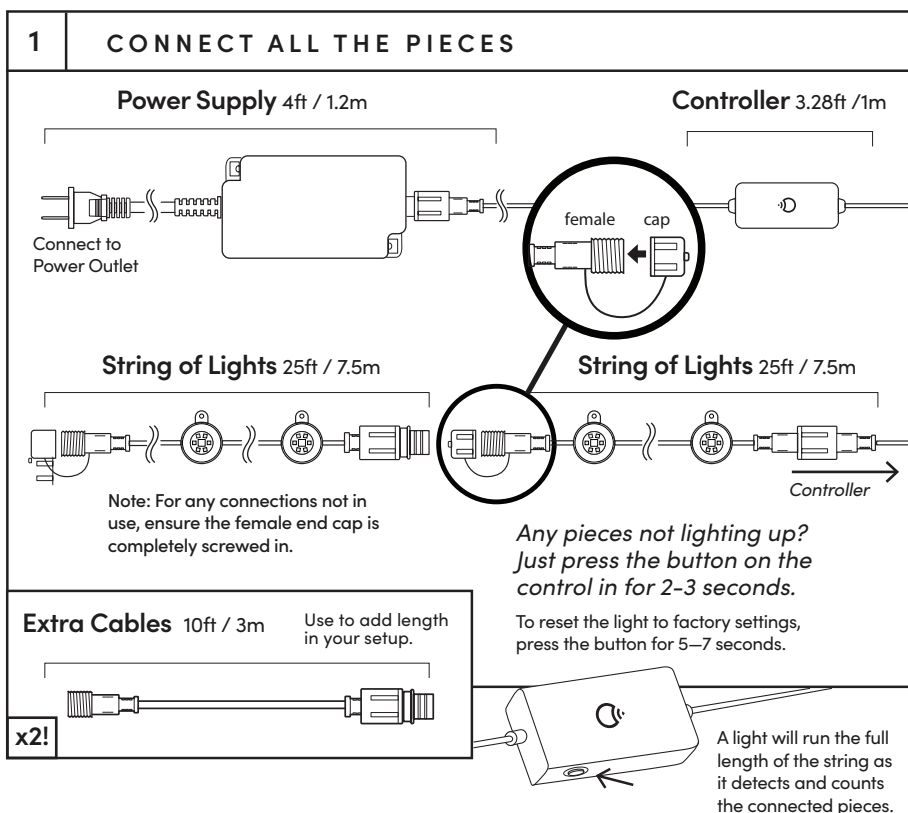
- a. Ground Fault Circuit Interrupter (GFCI) protection is to be provided on the circuit(s) or outlet(s) to be used for the wet location portable luminaire. Receptacles are available having built-in GFCI protection and are able to be used for this measure of safety.
- b. Do not mount or place near gas or electric heaters, fireplace, candles, or other similar sources of heat.
- c. Do not secure the wiring of the product with staples, nails, or place on sharp hooks. Install only using the mounting means provided.
- d. Do not let lights rest on the supply cord or on any wire.
- e. Do not use this product for other than its intended use.
- f. Do not hang ornaments or other objects from the cord, wire, or lights.
- g. Do not close doors or windows on the product or extension cords as this may damage the wire insulation.
- h. When in use, do not cover the product with cloth, paper, or any material that is not part of the product.
- i. Keep lights away from any combustible surface.
- j. Read and follow all instructions that are on the product or provided with the product.
- k. This product should be installed out of the reach of children.
- l. Do not secure string lights to buildings or other structural supports using nails, staples or other sharp, conducting materials. **DO NOT DAMAGE THE WIRE.**
- m. Do not submerge.
- n. Use only three-wire outdoor extension cords that have three-prong grounding plugs and grounding receptacles that accept the appliance's plug.
- o. Use only with an extension cord for outdoor use, such as an extension cord of cord type SEW, SEOW, SEOOW, SOW, SOOW, STW, STOW, STOOW, SJEW, SJEOW, SJEOOW, SJW, SJOW, SJOOW, SJTW, SJTOW, or SJTOOW.

KEEP THESE INSTRUCTIONS

1. **To avoid risk of shock**, always make sure the product is unplugged from the electrical outlet before assembling, disassembling, installing, relocating, servicing or cleaning it.
2. **Do not overload.** This product contains 50FT of string lights, made of two 25-foot sections. Each section uses up to 20W. Additional extension of 25 ft (sold separately) can be added to reach a total of 200 ft (8 sections) and use up to 120W.
3. **Do not use** with extension cord **near water** or where water may accumulate. Keep at least 4.8 m / 25 ft from pools and spas. Keep plugs and receptacles dry. Do not submerge.
4. Do not exceed the lowest of the indicated maximum wattage on the cord tag near the connected product's receptacle.
5. **TO REDUCE THE RISK OF FIRE:** Do not replace the attachment plug. It contains a safety device (fuse) that should not be removed. Discard product if the attachment plug is damaged.

1

CONNECT ALL THE PIECES



Before you install outside...

2

Adding your light to your app.

Connect all your pieces and add your light to your app using these instructions.

SUPER QUICK SETUP

USING MATTER?

1 Download the LIFX App and sign in.

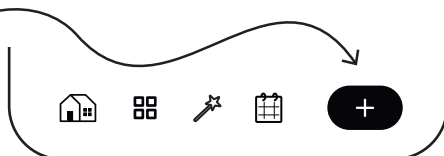
2 Make sure your light is on.

3 Hit the + button in the bottom right.

We'll guide you through from there.

Just scan the code on the front of this manual and pick the smart home platform you want to add your light to.

To use Matter home and away, you'll need a Google, Apple or other smart home hub that's Matter-enabled. Devices with older hardware may not be compatible.



You'll use the code on the front of this manual for quick setup in the LIFX app too.

Use the '+' to add new products, schedule lighting changes or to snapshot your current lighting and save as a Scene so you can trigger it again easily later.

3

Installation



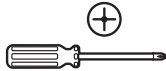
19.7in / 50cm



mounting screws

Planning a Permanent setup?

Grab your
Phillips
Screwdriver...



Measure up the space for your install and mark out where each light will sit. You can use chalk or pieces of masking tape to get an idea where the lights will fall. Use the peel and stick backing to tack up the lights, then use the screws provided to securely mount.

Note: Don't overtighten the screw.

It is recommended to mount using both mounting tape and mounting screws.

Setting up short-term?



adhesive backing

Simply clean the surface, peel the adhesive backs and stick! Press and hold each light for at least 60 seconds

Note: This adhesive may cause surface damage if removed. It is not recommended for mounting on brick or concrete and a preferred install is to use both the adhesive and screws.

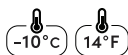
Your Wi-Fi:

LIFX lights connect to your 2.4 Ghz Wi-Fi frequency network, which routers can be set up for. This offers better range and stability for devices. You may also have a 5 Ghz connection, so if you're not sure which is which, check the current Wi-Fi you're connected to by pressing the Wi-Fi icon on your phone while connected and look at the listed details to find the frequency.

Router	802.11 b/g/n/ax	WPA2 security compatible
--------	-----------------	--------------------------

Technical Requirements:

A device running **iOS 14.0+** or **Android 8.0+**
A **Wi-Fi internet connection**. Wi-Fi access point must be 802.11b, g or n compliant with WPA2 security and a DHCP-configured connection available for every connected LIFX light.



Minimum starting
temperature.



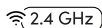
100%
≤ 3s

Reaches 100% brightness
in 3 seconds or less.



25000
hours

High quality LEDs rated
for 25,000 hours of use.



2.4 GHz

Connects to your routers
2.4GHz Wi-Fi band.

Product Details

Chromaticity co-ordinates: colored light

$x < 0,270$ or $x > 0,530$

$y < -2,3172 x^2 + 2,3653 x - 0,2199$

or $y > -2,3172 x^2 + 2,3653 x - 0,1595$

100-240V
50/60Hz

FEIT ELECTRIC CO. is the exclusive
owner of rights and interests in and
to the mark LIFX and the LIFX logo.



RoHS

© 2024
All rights reserved.
Covered by patents.
lifx.com/patents

LIFX works diligently to ensure that
LIFX products and their packaging
materials comply with all relevant
regulations in the regions we
supply. See lifx.com/compliance for
notices for your region.

Need a custom length? Adjust your light string to size.

OPTIONAL

Locate your Coupler set parts...

Cut & strip the wire.

Decide where you'd like to split the string of lights. Cut the wire in 2 places, removing the excess, and gather the ends you'd like to rejoin.

Gently strip back the white casing.

(2)
1/2"

Now strip the ends of each wire to expose the copper.

*Ensure 2" so product functions correctly and to prevent damage.

WARNING: RISK OF SHOCK.
Ensure the product is not connected at all before you alter the length of the product.

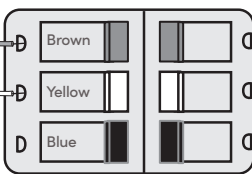


Take the male and female end pieces from the Coupler set and put the black end caps over your wire ends.

Locate the Splicing Connector and lift up the colored levers. Take a cable end (1) and separate the three wires.

Insert each into the matching slot.

Brown
Yellow
Blue



V+

Data

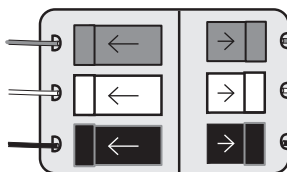
V-

Repeat on the other side (2).

See a video of this here.

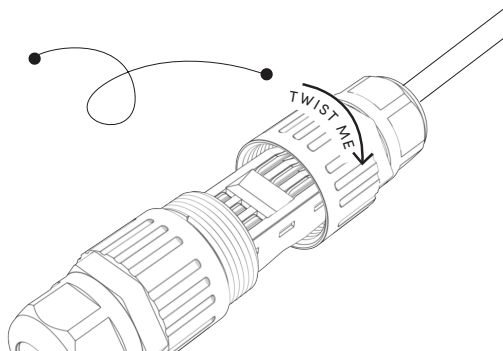


Press the levers down toward the wires to clamp these in place.



Secure the caps over the connector and wiring.

Tuck the Splicing Connector and wires into the cap on one side. Fit the two sides together and screw shut firmly.



Regulations & Compliance.

FCC Compliance Statement U.S.

This equipment has been tested and found to comply with the limits for a Class B digital device, under Part 15 of the FCC Rules. These limits provide reasonable protection against harmful interference in a residential installation. This equipment generates, uses and can radiate radio frequency energy and, if not installed and used under the instructions, may interfere with radio or television reception, which can be determined by turning the equipment off and on. The user is encouraged to correct the interference by one or more of the following measures:

- Reorient or relocate the receiving antenna
- Increase the separation between the equipment and the receiver
- Connect the equipment into an outlet on a circuit different from that to which the receiver is connected
- Consult the dealer or an experienced radio/TV technician for help

Changes or modifications not approved by LIFX can void the user's authority to operate the equipment.

This device complies with Part 15 of the FCC Rules. Operation is subject to the following two conditions: (1) This device may not cause harmful interference, and (2) this device must accept any interference received, including interference that may cause undesired operation.

Contains **FCC ID: SYW-LCM4**

Radiation Exposure Statement

This equipment complies with IC radiation exposure limits set forth for an uncontrolled environment.

Industry Canada Compliance.

LIFX complies with all applicable Industry Canada Standards. This Class B RFLD complies with the Canadian standard ICES-005.

Contains **IC: 20416-LCM4** www.lifx.com/compliance

RF exposure warning

This equipment must be installed and operated in accordance with provided instructions and the antenna(s) used for this transmitter must be installed to provide a separation distance of at least 20 cm from all persons and must not be co-located or operating in conjunction with any other antenna or transmitter. End-users and installers must be provided with antenna installation instructions and transmitter operating conditions for satisfying RF exposure compliance.

This device complies with Industry Canada license-exempt RSS standard(s). Operation is subject to the following two conditions: (1) this device may not cause interference, and (2) this device must accept any interference, including interference that may cause undesired operation of the device.

Changes & modification

Changes or modifications made to this device may void certification of the device. Changes or modifications made to this unit not expressly approved by the party responsible for compliance could void the user's authority to operate the equipment.

Frequency Information

Frequency Range (US & Canada): 2412-2462 MHz;

Maximum radio-frequency power

transmitted: 22.50dBm;

Modulation type : IEEE 802.11 b/g/n/ax

Installation requirements & recommendation

This device should only be installed in light fittings and fixtures that are designed to accept each fitting. Lamps, fittings and fixtures that are designed to accept smaller or lower wattage light bulbs may result in the LIFX bulb operating below its optimal capacity. For optimal performance it is recommended that LIFX bulbs be fitted into fixtures that provide sufficient air flow through and around the bulb. It is recommended that the LIFX bulb be installed away from other devices designed to receive or transmit radio signals. It is recommended LIFX bulb/s be installed and operated at a minimum distance of 30 cm from the body. For lamps with a weight significantly higher than that of lamps for which they are a replacement, attention should be drawn to the fact that the increased weight may reduce the mechanical stability of certain luminaires and may impair contact making and lamp retention.

Interference

LIFX has been designed to minimize interference with other radio, broadcast or receiving devices. The manufacturer is not responsible for any interference caused as a result of modifications to the product or by failure to adhere to the recommendations in this document and at support.lifx.com. This device generates radio frequency energy and, if not installed in accordance with the "recommended installation requirements" may cause harmful interference to radio communication devices. If the device is causing radio interference it is recommended that the user try:

- a. relocating the device to a different place;
- b. adjust the antenna on the receiving device;
- c. consult a technician experienced in radio interference.

Notices

- This device is not intended for use with emergency exits
- Use in open luminaire only
- Only use the control provided with or specified by these instructions to control this lamp. This lamp will not operate properly when connected to a standard (incandescent) dimmer or dimming control.
- Added weight of the device may cause instability of a free standing portable luminaire. Use only with a portable table lamp that is provided with a shade.

LIFX is not designed for use in:

- Excessively hot environments (e.g. close to ovens, radiators, heaters, etc.)
- Regions or countries other than that in which the product was intended for
- Outdoor and wet areas, except where the LIFX Product specifies that it is for both Indoor and Outdoor use.

When using LIFX

- Switch off the power supply and allow sufficient time for the light to cool before touching the fixture.
- Do not open device, as this will void the warranty
- Do not clean the device when it is powered on. If cleaning the product, use a soft dry cloth, do not use cleaning agents

Limited Warranty

General

Feit Electric Co ("LIFX") warrants the LIFX bulb (the "Product"), and only the Product, against defects in materials and workmanship under normal use ("Defect") for a period of TWO YEARS (730 days) from the date of retail purchase by the original purchaser ("Warranty Period"). Under this Limited Warranty, if a defect arises and a valid claim is received by LIFX within the Warranty Period, at its option and to the extent permitted by law, LIFX will either: 1. repair the Product at no charge, using new or refurbished replacement parts --or-- 2. exchange the Product with a new or refurbished Product.

In the event of a defect, to the extent permitted by law, these are your sole and exclusive remedies. A replacement Product or part assumes the remaining warranty of the original Product or ninety (90) days from the date of replacement or repair, whichever is longer. When a Product or part of the Product is exchanged, any replacement item becomes your property and the replaced item becomes LIFX's property. Parts provided by LIFX in fulfillment of its warranty obligation must be used in Products for which warranty service is claimed.

Exclusions & Limitations

This Limited Warranty applies only to the Product manufactured by or for LIFX that can be identified by the "LIFX trademark, trade name, or logo affixed to it. The Limited Warranty does not apply to any (a) LIFX products and services other than the Product, (b) non-LIFX hardware product, (c) consumables (such as batteries), or (d) software, even if packaged or sold with the Product or embedded in the Product. Refer to the licenses accompanying the software for details of your rights with respect to its use. LIFX does not warrant that the operation of the Product will meet your needs or requirements or be uninterrupted or error free. LIFX is not responsible for damage arising from failure to follow instructions relating to the Product's use or from failures resulting from inadequate electrical supply or internet access. This warranty does not apply to a Product or part of the Product that has been altered or modified (e.g. to alter functionality or capability) by anyone who is not a representative of LIFX or if the Product is inserted or installed in a casing not provided by LIFX. In addition, this Limited Warranty does not apply to Defects or damage caused by (a) use with non-LIFX products; (b) accident, abuse, misuse, flood, fire, earthquake or other external causes or abnormal conditions; (c) operating the product outside the permitted or intended uses or conditions described by LIFX or with improper voltage or power supply; or (d) service (including upgrades and expansions) performed by anyone who is not a representative of LIFX. Recovery and reinstallation of software programs and user data are not covered under

this Limited Warranty. This Limited Warranty does not cover the cost of returning the Product to LIFX; this is your responsibility. No LIFX reseller, agent, or employee is authorized to make any modification, extension, or addition to this Limited Warranty. If any term is held to be illegal or unenforceable, the legality or enforceability of the remaining terms shall not be affected or impaired.

EXCLUSIVE WARRANTIES

THE WARRANTIES SET FORTH HEREIN ARE THE EXCLUSIVE WARRANTIES PROVIDED BY LIFX, AND EXCEPT TO THE EXTENT PROHIBITED BY APPLICABLE LAW, ALL OTHER WARRANTIES, WHETHER EXPRESS OR IMPLIED WARRANTIES (INCLUDING WARRANTIES OF MERCHANTABILITY, FITNESS FOR A PARTICULAR PURPOSE AND NON INFRINGEMENT) ARE HEREBY EXCLUDED.

LIMITATION OF DAMAGES

EXCEPT TO THE EXTENT PROHIBITED BY APPLICABLE LAW, LIFX SHALL NOT BE LIABLE FOR ANY INCIDENTAL, INDIRECT, SPECIAL, OR CONSEQUENTIAL DAMAGES RESULTING FROM ANY USE OF THE PRODUCT OR BREACH OF EXPRESS OR IMPLIED WARRANTY OR CONDITION, OR UNDER ANY OTHER LEGAL THEORY. LIFX'S LIABILITY FOR DAMAGES RESULTING FROM ANY USE OF THE PRODUCT OR BREACH OF EXPRESS OR IMPLIED WARRANTY OR CONDITION, OR UNDER ANY OTHER LEGAL THEORY WILL BE LIMITED TO THE ORIGINAL COST PAID FOR OF THE DEFECTIVE PRODUCT.

Consumer Protection

Some states do not allow the exclusion or limitation of incidental or consequential damages, or allow limitations on how long an implied warranty lasts, so the above limitations or exclusions may not apply to you. This warranty gives you specific legal rights, and you may also have other rights that vary by state to state.

Governing Law and Arbitration

This Limited Warranty shall be governed by the laws of the State of California without giving effect to any conflict of laws principles that may provide the application of the law of another jurisdiction and without regard to the Convention on Contracts for the International Sale of Goods. Any claim or dispute in connection with this Limited Warranty shall be resolved in a cost effective manner through binding non appearance based arbitration. The arbitration shall be initiated through an established alternative dispute resolution provider mutually agreed upon by the parties. The alternative dispute resolution provider and the parties must comply with the following rules: a) the arbitration shall be conducted by telephone, online and/or be solely based on written submissions, the specific manner shall be chosen by the party initiating the arbitration; b) the arbitration shall not involve any personal appearance by the parties or witnesses unless otherwise mutually agreed by the parties; and c) any judgement on the award rendered by the arbitrator may be entered in any court of competent jurisdiction. If the foregoing arbitration clause does not apply for any reason, you agree to submit to the personal jurisdiction of the state courts located within San Francisco County, California and the federal courts in the Northern District of California for the purpose of litigating all such claims or disputes, which courts shall have exclusive jurisdiction of such claims or disputes. Notwithstanding the foregoing, LIFX may seek injunctive or other equitable relief to protect its intellectual property rights in any court of competent jurisdiction.